

# Expanding Harm Reduction Practices with HIV Providers

**Presented by the University of Pittsburgh  
and Elevyst**



# Our Team



## University of Pittsburgh Elevyst

### Mary Hawk, DrPH, LSW

Professor & Chair  
Evaluation Institute for Public Health  
Center for LGBT Health Research  
University of Pittsburgh School of Public Health  
Behavioral and Community Health Sciences

### Sean Fogler, MD, MBA

Chief Executive Officer & Founder  
Elevyst

### Teagen O'Malley, PhD, MPH

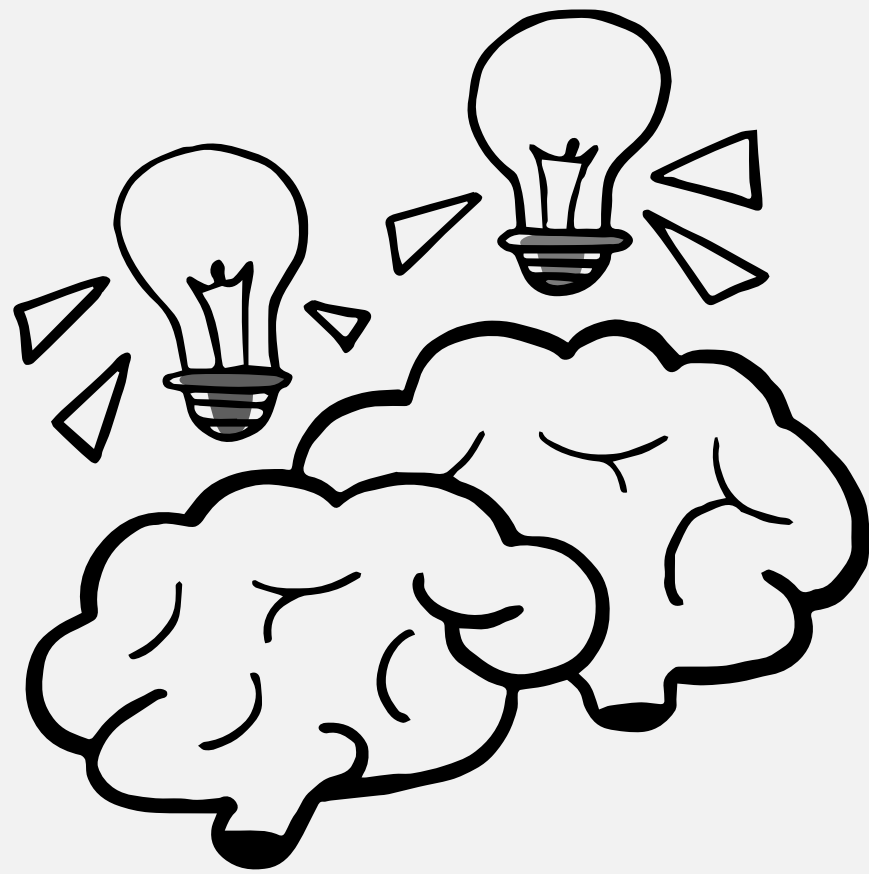
Research Assistant Professor  
Faculty in Infectious Diseases and  
Microbiology  
University of Pittsburgh School of Public  
Health

### Jessica Hessler, MPH, MSW, CHES®

Chief Operations Officer & Founder  
Elevyst

### Harley Roth, MPH

Senior Project Manager  
Department of Infectious Diseases &  
Microbiology  
School of Public Health  
University of Pittsburgh



## The Project

We developed an organizational coaching model using principles of harm reduction that can be used to help health care agencies conduct organizational self-assessments and identify strengths and opportunities for growth in the practice of harm reduction care for all oppressed populations living with HIV.

We will be piloting a capacity-building model to center relational approaches of harm reduction in PA HIV provider settings.



## Our Aim

- Understand interest, feasibility, and acceptability of a novel coaching model approach to capacity building
- Establish relational harm reduction as standard of HIV care and support in PA



## Participation

### What does participation entail? The partner agency will:

---

- Participate in a series of coaching sessions throughout Spring 2025
  - Tailored to the organization's needs and their availability of clinic site (~2 virtual and ~2 in person)
- Complete an organizational self-assessment around current harm reduction practices at the beginning
- Receive help from us to self-identify desired areas for harm reduction capacity building
- Craft a menu of training options based on results
- Include broad participation by those involved in patient care and support at partner agency
- Be offered reflections on feasibility, acceptability, and impact of HR coaching model via formal/informal assessments

**Modules will be tailored to the partner agency's needs and may include:**

- Information gathering
- Lectures
- Learning activities
- Narrative storytelling
- Case scenarios
- Other focus areas, as requested



## **Module Structure**



# Coaching Overview

The program includes five modules:

- 1 Module One**  
Pre-Workshop & Assessment
- 2 Module Two**  
Substance Use Stigma
- 3 Module Three**  
Harm Reduction: History & Evidence
- 4 Module Four**  
Intention and Action
- 5 Module Five**  
Follow-up

# Module One: Pre-Workshop

## Objectives

---

- Identify organizational growth opportunity specific to harm reduction approaches to care
- Set objectives
- Create plan to measure achievement of goals

# Module Two: Storytelling Substance Use Stigma

## Objectives

---

- Discuss ways that substance stigma experienced in healthcare settings impacts trajectories of care for people who use drugs
- Demonstrate increased empathy for people who use drugs by critically engaging with and reflecting on narratives shared by individuals with lived and living substance use experiences
- Identify key themes such as stigma, resilience, and the impact of societal structures on substance use, and apply these insights to foster a more compassionate and informed approach to addressing substance use within the organizational setting

# **Module Three: History & Evidence of Harm Reduction**

## **Objectives**

---

- Discuss the history and evidence of harm reduction evidence
- Define and discuss structural and relational approaches to harm reduction care
- Define and discuss the importance of intersectionality
- Opportunities to incorporate harm reduction principles in practice

## Objectives

---

- 4 Module Four**  
Intention and Action
- 5 Module Five**  
Follow-up

# Modules Four & Five

# Thank you!

