



Pennsylvania Department of Health

Bureau of Communicable Diseases

Division of HIV Health

Division Overview

Division of HIV Health Sections

The Division of HIV Health includes three sections:

**HIV
Prevention
Program**

**HIV Care
Program**

**Monitoring
and
Evaluation**

LET'S REVIEW

How many sections are in there in the Division of HIV Health?



Can you name one of the sections in the Division of HIV Health?

hmm...



▶ HIV Prevention Section

Utilizes state and Centers for Disease Control and Prevention (CDC) funds to implement a comprehensive HIV program that reduces morbidity, mortality, and related health disparities.

CDC Grant - 11 Strategies

Strategy 1

Systematic collection, analysis, interpretation, and dissemination of HIV data for surveillance and prevention program monitoring and evaluation

Strategy 2

Identification of persons with HIV and persons at risk for HIV

Strategy 3

Development, maintenance, and implementation of plans to respond to HIV transmission clusters and outbreaks

Strategy 4

Comprehensive HIV-related prevention services for persons with HIV (PWH)

Strategy 5

Comprehensive HIV-related prevention services for HIV-negative persons at risk for HIV infection

Strategy 6

Perinatal HIV prevention and surveillance activities

Strategy 7

Community-level HIV prevention activities

Strategy 8

Partnerships for integrated HIV prevention and care planning

Strategy 9

Implementation of structural strategies to support and facilitate HIV surveillance and prevention

Strategy 10

Data-driven planning, monitoring, and evaluation to continuously improve HIV surveillance, prevention, and care activities

Strategy 11

Capacity building activities for HIV programs, epidemiologic science, and geocoding



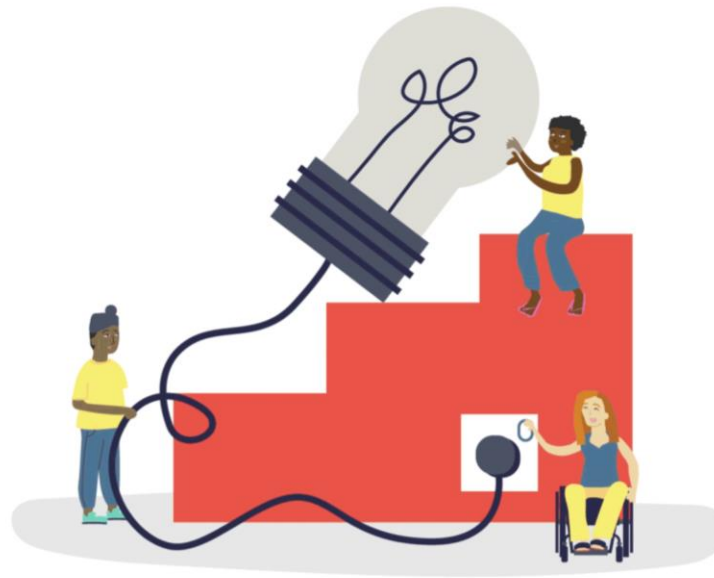
REVIEW



Who is the primary federal funder for the Divisions Prevention section?



How many strategies are there under the CDC Grant?



Bonus Question: Name a strategy!

▶ HIV Care Section

The Care section is funded through the Health Resources and Service Administration (HRSA), Housing Opportunities for Persons with HIV/AIDS (HOPWA), Special Pharmaceutical Benefits Program (SPBP) 340B Rebates, and the Commonwealth of Pa.


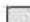

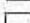
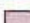

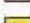
Contract with seven Regional Grantees who work with local providers to create a statewide service delivery network.

PA Regional HIV Care Grantees

Pennsylvania Regional HIV Care Grantees



Legend

- | | |
|--|--|
|  AIDSNET |  Southcentral |
|  Northcentral |  Southwest |
|  Northeast |  AACO |
|  Northwest | |

▶ Examples of Ryan White Services

Core Medical

- Medical Case Management
- Oral Health Care
- Mental Health Services
- Outpatient Substance Abuse Services

Support Services

- Emergency Financial Assistance
- Food Bank/Home Delivered Meals
- Housing Services
- Outreach

HOPWA Services

HOPWA funding is provided to Regional grantees for housing-related services

- HOPWA services include:
 - ▣ Tenant Based Rental Assistance (TBRA)
 - ▣ Short Term Rent/Mortgage/Utility (STRMU)
 - ▣ Permanent housing placement
 - ▣ Supportive services – case management
- The number of individual households that received housing assistance through HOPWA for 2023 was **640**. This number exceeded the HOPWA goal set for 2023 of 600 households served.

Continuous Quality Improvement

- A Continuous Quality Improvement (CQI) Plan is a requirement of HRSA funding
- Goal is to improve health outcomes of participants
- CQI Workgroup meets monthly
 - Evaluate quarterly data
 - Selects a new quality improvement project each year
 - Develop a quality management program

Special Pharmaceutical Benefits Program (SPBP)

- SPBP is Pennsylvania's Ryan White AIDS Drug Assistance Program (ADAP)
- In the 2023-2024 Ryan White fiscal year there were 8,370 people enrolled in SPBP
- Services provided:
 - Coverage of 4,000+ medications at over 2,700 pharmacies
 - Lab testing for uninsured individuals
 - Payment of Medicare Part C and Part D monthly premiums

Eligibility for SPBP

- Have a diagnosis of HIV
- Live in Pennsylvania
- Individual or household income at or below 500% of the FPL
 - Individual \$75,300
 - Allowance for each additional household member \$26,900
- Cannot be enrolled in Medicaid with full prescription benefits
 - Exception: Individuals who are also enrolled in a Medicare drug plan in addition to Medicaid with full prescription benefits are eligible to enroll in SPBP
- Must validate eligibility every 12 months



TIME FOR
REVIEW

What is a Ryan White service the Division of HIV would fund?



How many households received housing assistance through the HUD HOPWA program in 2023?



What is the ultimate goal of the Clinical Quality Management (CQM) Plan?



True or False: Anyone with a diagnosis of HIV can be enrolled into SPBP?



Bonus Question:
What would cause someone to not be eligible for SPBP?

Monitoring and Evaluation Section

- Collaborates with prevention and Ryan White Part B Programs
- Assists in developing comprehensive HIV Programs
- Ensure program elements are reflected in contracts
- Execute budget and procurement processes
- Collect and analyze data/develop performance measurement tools
- Oversee M&E and quality assurance
 - ▣ HIV surveillance and prevention grants
 - ▣ RWHB grant
 - ▣ PPAs

Monitoring and Evaluation Program Updates

- Re-evaluation of Project Officer (PO) assignments once two additional POs for prevention are hired.
- No plans to change RW POs.
- Enhanced data reporting (Has been completed).
- Data dashboard has been created but is currently for internal use only.
- Data visualization reports have been created and are being shared regularly

REVIEW
TIME!

Tell me something the Monitoring and Evaluation section is responsible for.



Questions!

